

SOAR810 COUNTER-UAV MULTI SENSOR INTELLIGENT POSITIONING SYSTEM

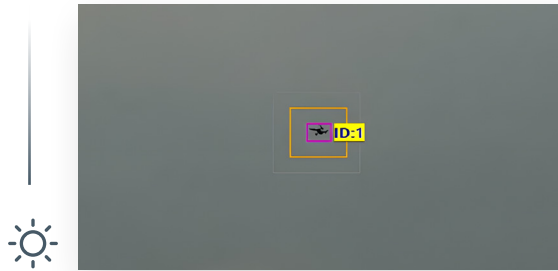


Learn more

EO/IR Imaging

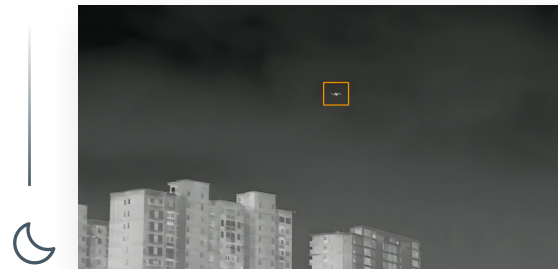
Visible light camera view

The visible light camera delivers live HD imaging with a 42.80°-0.80° horizontal field of view for wide-area and long-range observation in daytime and low-light conditions. Detected targets can be shown with tracking boxes.

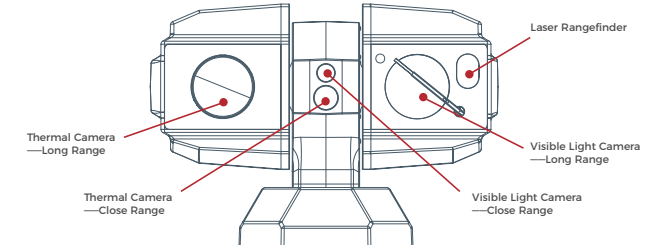


Thermal camera view

The thermal imaging camera provides live thermal images with horizontal fields of view of 102° and 4.38°, supporting long-range UAV detection and tracking in daytime, nighttime, and low-visibility conditions.



Technical Specifications



Sensors	
Thermal Sensor-Long Range	LWIR 640 × 512, 4.38° HFoV, 100 mm lens
Thermal Sensor-Close Range	LWIR 640 × 512, 102° HFoV, 4.1 mm lens
Visible Sensor-Long Range	2688 × 1520, 42.80°-0.80° HFoV, 10-550 mm lens
Visible Sensor-Close Range	2688 × 1520, 93.10° HFoV, 3.5 mm lens
Laser Rangefinder	3 km / 6 km
PTU	
Pan Range / Speed	360° endless; 0.01° to 180°/sec
Tilt Range / Speed	-90° to +90°; 0.01° to 120°/sec
Acceleration	500°/s ²
Accuracy	0.005°
Intelligence	
Intelligent Detection	Aircraft Detection; Perimeter (human & vehicle classification)
AI based Target-Tracking	Support
Interface	
Network Interface	1 × RJ45 Ethernet Interface (10/100 Mbps)
Video Output	1 Input / 1 Output
Audio	1 Input / 1 Output
Control Interface	RS-422 / Ethernet
General	
Power	DC24V ± 15%, 5 A
Operating Temperature	-40°C to +70°C
Protection Level	IP67
Dimension	491.5 mm × 235.3 mm × 378.1 mm
Weight	Approx. 20 kg